

THE Athletic Trainer System



EMR Software

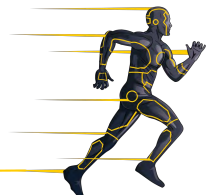


- ★ FedRAMP certified data center
- ★ 100% US owned & operated company
- ★ All data stored in the U.S.

SOC II Type 2 certified and HIPAA Compliant

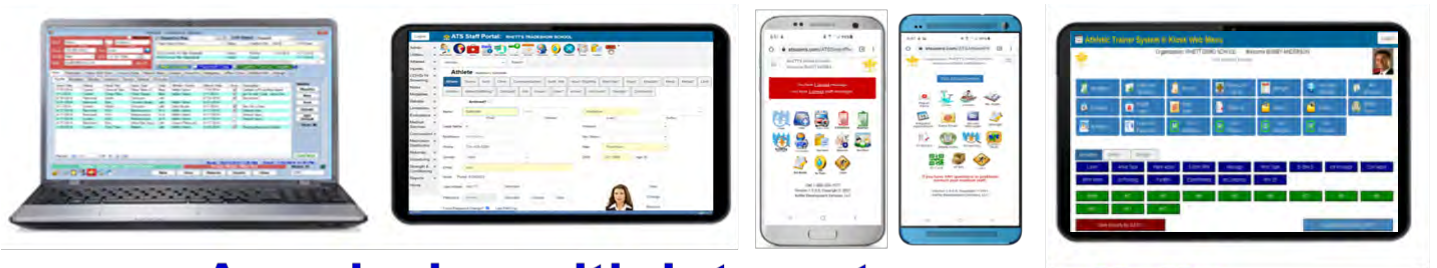
**Athletic Trainer System
24 Village Park Drive
Grove City, PA 16127**

**1-888-328-2577
info@athletictrainersystem.com
www.athletictrainersystem.com**



ATS is the best all-in-one “True EMR” flexible enough for EVERY Athletic Trainer.

ATS empowers Athletic Trainers and other staff for more efficient documentation in a coordinated environment.



Any device with internet connectivity

ATS Modules

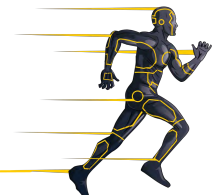
- ATS Desktop
- ATS Staff Phone
- ATS Staff Portal
- ATS Athlete Portal & Phone
- ATS Kiosk
- ATS Quick Med Check
- ATS Family Communications Center



CUSTOMER SERVICE
IS NOT A DEPARTMENT.
It IS AN ATTITUDE.

Three icons representing customer support channels: a play button for 'VIDEO', an envelope for 'E-mail Support', and a speech bubble for 'Live Chat'. A small photo of a smiling woman is also included.

Customer support is one of ATS' highest priorities. We want to know if you are experiencing issues with your program, because we want to fix it. Or if you have suggestions on a new feature, or something we can add to enhance the program, do not hesitate to call or email.





ATS "What's New"

Mental Health

As mental health concerns have increased; the ability to monitor or screen athletes has also grown. We have responded to this by making mental health forms, reports and data mining available.

Existing Screening Forms:

- Adult ADHD Self-Report Scale
- Alcohol Use
- Cannabis Use
- Center for Epidemiologic Studies
- Eating Attitudes Test-26
- Generalized Anxiety Disorder
- Insomnia Severity Index
- Patient Health Questionnaire (PHQ-9)
- Sick Control One Fat Food
- Study Demographics

Staff may receive an email notification for questions in **ANY** form that are configured for this purpose. For example, if a student answers "yes" to feeling depressed a notice can be sent to one or several staff members.

Notes

Appointments

Referrals

Online Forms

eFiles

Medications



EMR Software

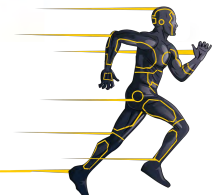


EMR Software
Coming in June!



Environmental Notice Tracking

Keep track of and send out notices for weather and environment related practice and event restrictions!



Highlighted Features



Full circle communication

- Group email messages for non-staff.
- Secure message to athlete, contacts & staff.
- Appointment reminders.
- Injury Journal to show history.
- Group notices for staff.
- Batch reports for coaches/staff.
- Batch notes for emergency contacts.

Nightly Sync with other software

ATS now has a process that allows our clients to sync information from other software systems to their ATS database.

Data Miner, ROI

- In addition to the 700+ reports, the “Data Miner” allows you to select & export data to Microsoft Excel.
- Our ROI reports show productivity and validation for staff and equipment.

View Your Data Multiple Ways

- 700+ reports for all areas.
- Data miner.
- Injury Analytics.
- Admin dashboard.
- Screens on your laptop, PC & phone.

Coaches are able to...

- ✓ Securely access athlete information (emergency contacts, insurance, paperwork) from their phones.
- ✓ Communicate with athletes or parents securely.
- ✓ Can receive automated report(s)
- ✓ Can receive timely updates on injuries
- ✓ Easily communicate with medical staff
- ✓ See paperwork & cleared-to-play status
- ✓ See injury, practice & game status

Concussions

To better protect our clients and student athletes, our concussion module stands above others in the industry offering 6 customizable evaluation templates built around the SCAT, BESS, SAC, VOMS & more.



Contact Us



ATS Website



Request
a demo



Our ATS Lite
Comparison



Video
Overview



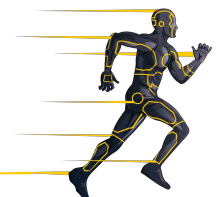
LinkedIn



YouTube



Facebook





ATS Business Partners

Concussions



Official EMR Sponsor



Secondary Insurance



Bob McCloskey Insurance
BMI BENEFITS - FULL TPA SERVICES



WELLFLEET



Registration



Billing for Services



Outside EMR Connectivity



DATALYSCENTER
CERTIFIED

NCAA® Injury Surveillance Program

